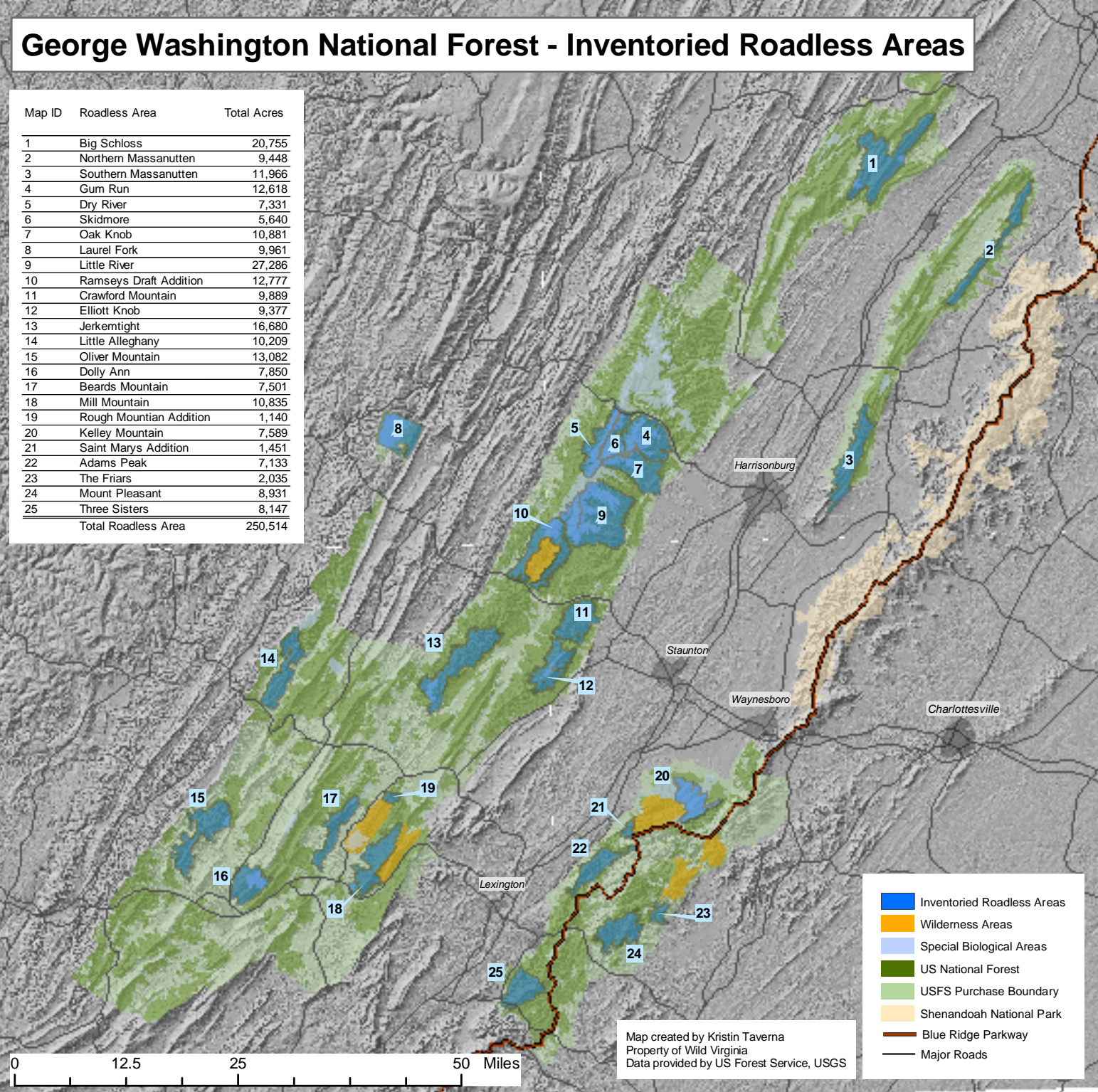


George Washington National Forest - Inventoried Roadless Areas

Map ID	Roadless Area	Total Acres
1	Big Schloss	20,755
2	Northern Massanutten	9,448
3	Southern Massanutten	11,966
4	Gum Run	12,618
5	Dry River	7,331
6	Skidmore	5,640
7	Oak Knob	10,881
8	Laurel Fork	9,961
9	Little River	27,286
10	Ramseys Draft Addition	12,777
11	Crawford Mountain	9,889
12	Elliott Knob	9,377
13	Jerkentight	16,680
14	Little Alleghany	10,209
15	Oliver Mountain	13,082
16	Dolly Ann	7,850
17	Beards Mountain	7,501
18	Mill Mountain	10,835
19	Rough Mountain Addition	1,140
20	Kelley Mountain	7,589
21	Saint Marys Addition	1,451
22	Adams Peak	7,133
23	The Friars	2,035
24	Mount Pleasant	8,931
25	Three Sisters	8,147
Total Roadless Area		250,514



Map created by Kristin Taverna
 Property of Wild Virginia
 Data provided by US Forest Service, USGS

- Inventoried Roadless Areas
- Wilderness Areas
- Special Biological Areas
- US National Forest
- USFS Purchase Boundary
- Shenandoah National Park
- Blue Ridge Parkway
- Major Roads

0 12.5 25 50 Miles